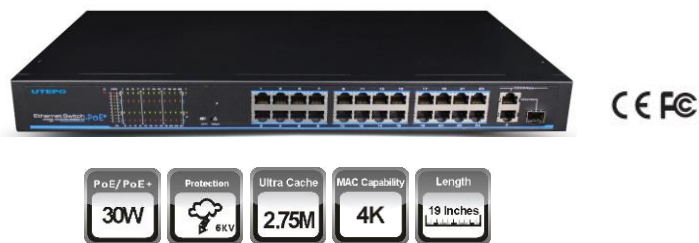


NTB2402E-POE

24 Ports PoE Fast Unmanaged Ethernet Switch

802.3af/at, 6KV Lightning Protection

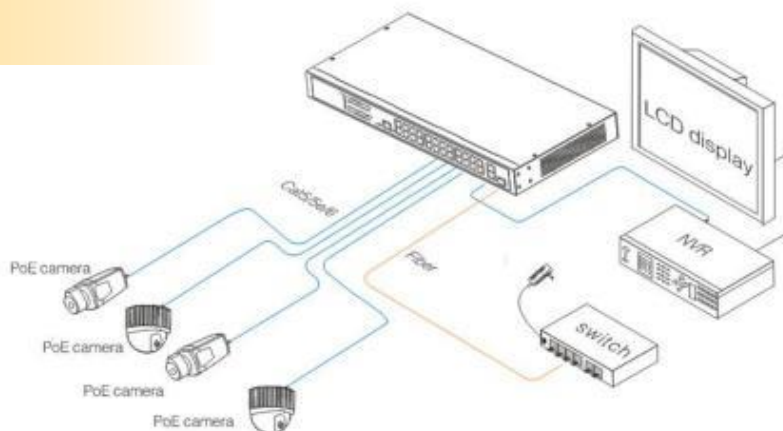
The 24 ports PoE switch is an unmanaged PoE Ethernet switch with 24 * 10/100Base-TX downlink PoE ports and 2 * 10/100/1000Base-T uplink Ethernet ports featuring 30w 802.3at PoE+ as well as 1 additional Gigabit Combo port. The total PoE power budget is up to 300w. It supports real-time PoE output LED display and is widely deployed for video security monitoring systems and network projects, etc



Product Features

- Provide 24*10/100Base-TX downlink PoE Ethernet ports, 2*10/100/1000Base-T uplink Ethernet ports and 1*1000Base-X/SFP
- Downlink Ethernet ports support PoE+, each port supports max. 30W output
- Support power consumption indication (LED indicates power output status)
- One-key CCTV mode: all the downlink ports can only communicate with uplink ports retrain the network storm to 3Mbps; extend transmission distance of the downlink ports to 250m max.
- Quick installation, easy operation, convenient for wall-mounted, desktop and rack installations.

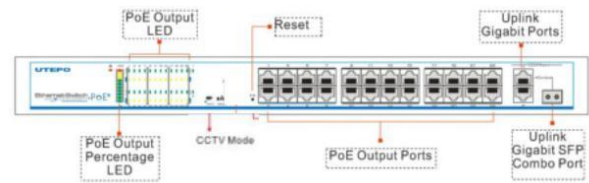
Application



Physical Features



Interface Drawing



Product Contents

The product comes with the following:

- NTB2402E-POE (1 pc)
- Power Adapter (1 pc)
- Mounting Brackets (1 pc)
- User Manual (1 pc)

Hardware Specifications

Item	Description
Downstream Ports	24* 10/100Base-TX (PoE)
Uplink Ports	2*10/100/1000Base-T and 1*1000Base-X/SFP (Combo)
Network Standards	IEEE802.3, IEEE802.3u, IEEE802.3ab, IEEE802.3z, IEEE802.3x
Switch Capacity	8.8Gbps
Throughput	6.55Mpps
Switch Processing Scheme	Store and Forward
Memory Buffer Size	2.75Mbits
MAC Table Size	4K
PoE Standards	802.3af/at (PSE)
PSE Type	End-span
One-key CCTV mode	All downlink ports can only communicate with uplink ports, retrain the network storm to 3Mbps, extend transmission distance of the downlink ports to 250m max.
Power Pin Assignment	1/2(+), 3/6(-)
PoE Power Output	54V DC, 30 watts max
PoE Budget	270 watts max
Lightning protection	6KV Execute: IEC61000-4-5
ESD	6KV Contact discharge 8KV Air discharge Execute: EC61000-4-2
Power Supply	100~240V AC; 50/60Hz
Power Dissipation	<300W (Including PoE)
Operating temperature	-10°C~50°C
Storage temperature	-40°C~85°C
Humidity	5%-95% (non-condensing)
Dimension (L×W×H)	442mm × 207mm × 44.5mm
Weight	2.79kg
Certifications	CE, FCC, ROHS

Related Products

- ❖ 16 Ports PoE Fast Unmanaged Ethernet Switch– NTB1602E-POE